

GRAPHENSTONE CRADLE TO CRADLE™ CERTIFIED



“Graphenstone gets Cradle to Cradle Certified™, the highest distinction worldwide.”

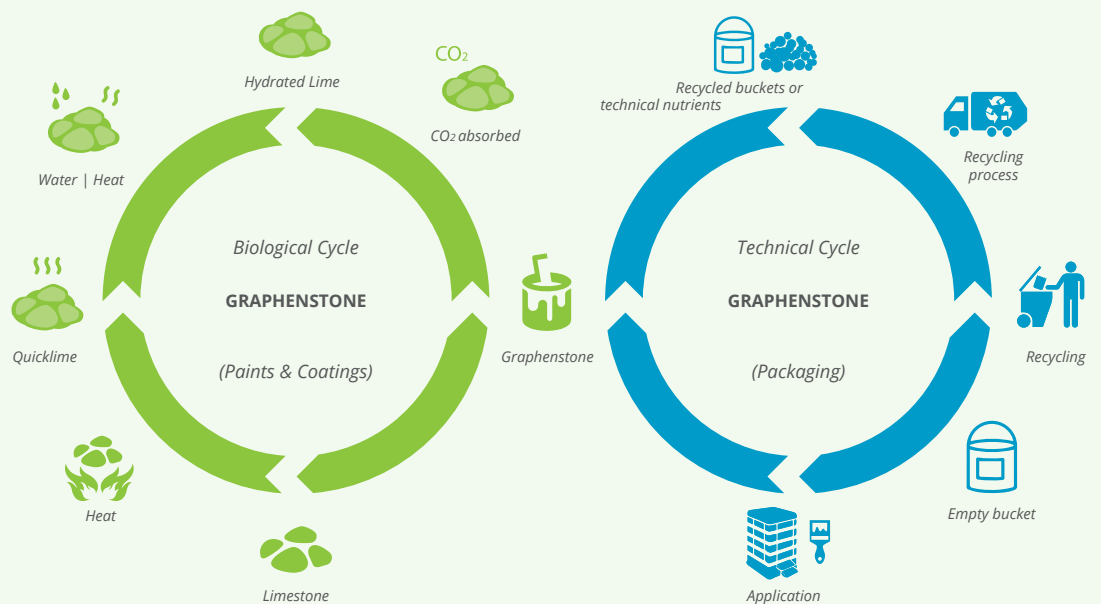
Graphenstone presents materials whose raw material, lime, is obtained by artisanal means, helping to preserve the purity, density, the benefits and properties of limestone. The benefits of using the purest Lime: breathable, antibacterial, antifungal and insect repellent. It also contains graphene, a nano component manufactured through gas deposition, which enhances properties of flexibility, hardness, and thermal conductivity.

- Graphenstone indoor paint (white)
- Graphenstone outdoor paint (white)
- Graphenstone Filler

PRODUCT OPTIMIZATION SUMMARY

Cradle to Cradle Certified™ Banned List compliant
 Material Health optimization strategy not required
 No exposure from carcinogens, mutagens, or reproductive toxicants
 Meets VOC emissions testing requirements
 Product is fully optimized - does not contain any GREY or x-assessed chemicals
 * Process chemicals have been identified and none are GREY or x-assessed

Cradle to Cradle Certified Product Scorecard	
MATERIAL HEALTH	Gold
MATERIAL REUTILIZATION	Gold
RENEWABLE ENERGY & CARBON MANAGEMENT	Gold
WATER STEWARDSHIP	Platinum
SOCIAL FAIRNESS	Gold
OVERALL CERTIFICATION LEVEL	Gold



Cradle to Cradle Certified™ GOLD

In addition to the Silver level requirements, all products certified Gold under Version 3.0 must meet the following requirements:

Material Health

- The product has been 100% assessed (by weight) using A, B, C ratings. All EMCs have been assessed as non-X.
- The product contains no X assessed materials (optimization strategy is not required).
- Product meets C2C emissions standards.

Material Reutilization

- The product has a Material Reutilization Score that is ≥ 65 .
- The manufacturer has completed a "nutrient management" strategy for the product including scope, timeline, and budget.

Renewable Energy and Carbon Management

- For the final manufacturing stage of the product, 50% of purchased electricity is renewably sourced or offset with renewable energy projects, and 50% of direct on-site emissions are offset.

Water Stewardship

- Product-related process chemicals in effluent are optimized (chemicals identified as problematic are kept flowing in systems of nutrient recovery; effluents leaving facility do not contain chemicals assessed as problematic).
- OR
- Demonstrated progress on the strategy developed for the Silver level requirements (required for facilities with no product relevant effluent).

Social Fairness

- Complete two of the Silver-Level requirements: Material specific and/or issue-related audit or certification relevant to a minimum of 25% of the product material by weight is complete (FSC Certified, Fair Trade, etc.).
- OR
- Supply chain-relevant social issues are fully investigated and a positive impact strategy is developed.
- OR
- The company is actively conducting an innovative social project that positively impacts employee's lives, the local community, global community, social aspects of the product's supply chain, or recycling/reuse.

"Graphenstone eliminates any concept of waste and becomes a product with a green life cycle."

CRADLE TO CRADLE PRODUCTS INNOVATION INSTITUTE

LICENSED MARKS:

 Cradle to Cradle Certified™ Gold

THE LICENSED MARKS IDENTIFIED ABOVE MAY BE LICENSED TO:
 Industria Española para el Desarrollo e Investigación SA (IEDISA)

FOR THE BELOW LISTED CERTIFIED PRODUCTS ASSOCIATED WITH THE NAME:
 Graphenstone indoor and outdoor paint (only white color) and filler

León B. Perkins
 Cradle to Cradle Products Innovation Institute

ISSUE DATE: 16 February 2016
CERTIFICATION #: 2788
EXPIRATION DATE: 15 February 2018

LEAD ASSESSMENT BODY: Eco Intelligent Growth
MATERIAL HEALTH ASSESSMENT BODY: Arche Consulting

Only the following products are considered Certified Products) within the scope of this certification and the associated Trademark License Agreement:
 Graphenstone indoor paint (white)
 Graphenstone outdoor paint (white)
 Graphenstone Filler

Packaging is assessed and meets Basic level requirements

Certified under Version 3.1 of the Cradle to Cradle Certified™ Product Standard
 Use of Licensed Marks is subject to terms and conditions of the C2CPI Trademark License Agreement and Trademark Use Guidelines.
 Cradle to Cradle Certified™ is a certification mark registered by the Cradle to Cradle Products Innovation Institute.

MINIMIZE

GRAPHENSTONE complies with Reuse, Reduce and Recycle philosophy.

RETHINK

GRAPHENSTONE use material effectively.

More information:
<http://www.c2ccertified.org/>

Graphenstone indoor and outdoor paint (only white color) and filler



INDUSTRIA ESPAÑOLA PARA EL DESARROLLO E INVESTIGACIÓN SA (IEDISA)



Renewal date 15 February 2018

Manufacturer Description

Graphenstone presents materials whose raw material, lime, is obtained by artisanal means, helping to preserve the purity, density, the benefits and properties of limestone.

The benefits of using the purest Lime: breathable, antibacterial, antifungal and insect repellent. It also contains graphene, a nano component manufactured through gas deposition, which enhances properties of flexibility, hardness, and thermal conductivity.

Graphenstone indoor paint (white)
Graphenstone outdoor paint (white)
Graphenstone Filler

Packaging is assessed and meets Basic level requirements

Graphenstone indoor and outdoor paint (only white color) and filler



Material
Health

GOLD

INDUSTRIA ESPAÑOLA PARA EL DESARROLLO E INVESTIGACIÓN SA (IEDISA)



Renewal date 15 February 2018

Manufacturer Description

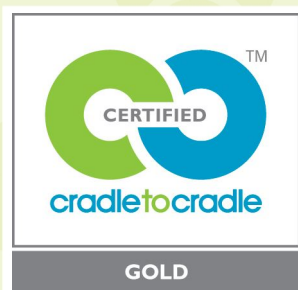
Graphenstone presents materials whose raw material, lime, is obtained by artisanal means, helping to preserve the purity, density, the benefits and properties of limestone.

The benefits of using the purest Lime: breathable, antibacterial, antifungal and insect repellent. It also contains graphene, a nano component manufactured through gas deposition, which enhances properties of flexibility, hardness, and thermal conductivity.

Graphenstone indoor paint (white)
Graphenstone outdoor paint (white)
Graphenstone Filler

Packaging is assessed and meets Basic level requirements

LICENSED MARKS:



Cradle to Cradle Certified™ Gold

THE LICENSED MARKS IDENTIFIED ABOVE MAY BE LICENSED TO:

Industria Española para el Desarrollo e
Investigación SA (IEDISA)

FOR THE BELOW LISTED CERTIFIED PRODUCTS ASSOCIATED WITH THE NAME:

Graphenstone indoor and outdoor paint
(only white color) and filler

A handwritten signature in black ink that reads "Lewis B. Perkins".

Cradle to Cradle Products Innovation Institute

ISSUE DATE

16 February 2016

CERTIFICATION #

2788

EXPIRATION DATE

15 February 2018

LEAD ASSESSMENT BODY:
Eco Intelligent Growth



MATERIAL HEALTH ASSESSMENT BODY:
Arche Consulting

Only the following products are considered Certified Product(s)
within the scope of this certification and the associated
Trademark License Agreement:

Graphenstone indoor paint (white)
Graphenstone outdoor paint (white)
Graphenstone Filler

Packaging is assessed and meets Basic level requirements



Graphenstone indoor and outdoor paint (only white color) and filler

ISSUED TO Industria Española para el Desarrollo e Investigación SA (IEDISA)

STANDARD 3.1

EXPIRES 15 February 2018

LEAD ASSESSMENT BODY

Eco Intelligent Growth

MATERIAL HEALTH ASSESSMENT BODY

Arche Consulting

ASSESSED APPLICATIONS

Manufacturing: Mixing; Filling; Use: Application by professionals; Paint for indoor and outdoor use; End-of-Life: Recycling; Landfill

PRODUCTS COVERED

- Graphenstone indoor paint (white)
- Graphenstone outdoor paint (white)
- Graphenstone Filler

Packaging is assessed and meets Basic level requirements

PRODUCT OPTIMIZATION SUMMARY

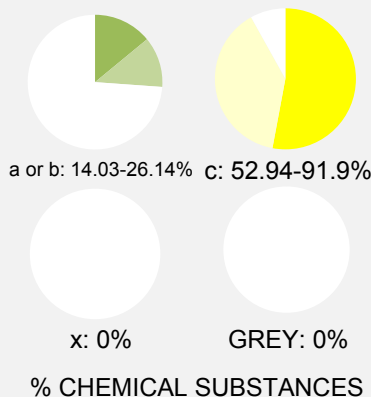
- Cradle to Cradle Certified*TM Banned List compliant
- Material Health optimization strategy not required
- No exposure from carcinogens, mutagens, or reproductive toxicants
- Meets VOC emissions testing requirements
- Product is fully optimized - does not contain any GREY or x-assessed chemicals
- Process chemicals have been identified and none are GREY or x-assessed

PERCENTAGE OF CHEMICAL SUBSTANCES ASSESSED BY WEIGHT

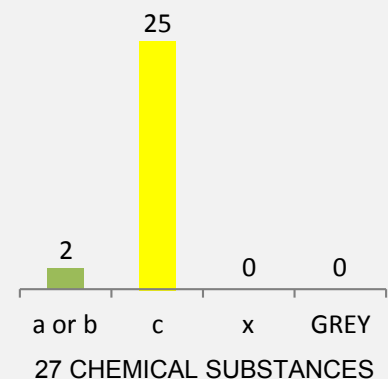
100%

Inventory threshold for chemicals in each material = 100 ppm

ASSESSMENT RATINGS BY WEIGHT



PRODUCT OPTIMIZATION



Material Health Certificate Guide

The Material Health Certificate is awarded to products assessed against the requirements in the Material Health category of the *Cradle to Cradle Certified™* Product Standard. The Material Health achievement level (Basic, Bronze, Silver, Gold, or Platinum) is shown in the certificate's upper right corner. A Material Health Certificate does not indicate that a product is *Cradle to Cradle Certified™*, which requires assessment against all five Standard categories.

The *Cradle to Cradle Certified™* Material Health Assessment Methodology is a contextual assessment based on chemical hazard identification and qualitative exposure considerations during a product's final manufacture, use, and end-of-use. The exposure assessment is highly simplified and more conservative compared to a conventional, quantitative risk assessment.

Definitions of Administrative Fields

Field	Definition
Issued To	Company that sells the assessed product(s).
Assessed By	Accredited Assessment Body responsible for conducting the product assessment.
Expires	Date the certificate expires. Certificate renewal is required biennially.
Standard	Version of the Standard (Material Health subsection only) the product was assessed against.
Assessed Scenarios	Use and end-of-use scenarios that the assessor considered in the exposure portion of the Material Health assessment. Assessment results are only valid for these scenarios.
Products Covered	Products included in the scope of the certificate. Certificates may cover multiple product variations.

Definitions of Product Optimization Summary Fields

***Cradle to Cradle Certified™* Banned List compliant**

The product's materials are not known to contain chemicals on the Banned Lists of Chemicals above permitted thresholds.

Material Health optimization strategy developed

Plan developed to phase out x assessed chemicals and assess GREY content.

No exposure from carcinogens, mutagens, or reproductive toxicants

Assessed materials do not contain carcinogens, mutagens, or reproductive toxicants with plausible exposure routes.

Meets VOC emissions testing requirements

The product meets the volatile organic compound (VOC) emissions testing requirements described in the Standard.

Does not contain any GREY or x-assessed chemicals; product is fully optimized

The product's materials contain chemicals with only a, b, or c risk ratings (no GREY or x). (Note: In the *Cradle to Cradle Certified™* Material Health Assessment Methodology, chemicals in each material are assigned a, b, c, x, or GREY risk ratings. Each material is then assigned an A, B, C, X, or GREY final assessment rating based on the risk ratings of its constituent chemicals. The following table explains the rating system.)

a or b (A or B)	Optimal
c (C)	Moderately problematic, but acceptable for use
x (X)	Highly problematic; targeted for phase out
GREY	Considered unassessed due to unknown identity or lack of toxicity information

Process chemicals have been identified and none are GREY or x-assessed

All process chemicals have been assessed and received an a, b, or c risk rating (no x-assessed or GREY).

Percentage Assessed by Weight

For single-material products, the cumulative percentage of assessed chemicals (a, b, c, and x). For other products, the cumulative percentage of assessed materials (A, B, C, and X). When a certificate represents a group of products, a percent range is shown.

Assessment Ratings by Weight

For single-material products, the percentage of a or b (shown in green), c (shown in yellow), and x (shown in red) assessed chemicals. For other products, the percentage of A or B (shown in green), C (shown in yellow), and X (shown in red) assessed materials. When a certificate represents a group of products, percent ranges are shown.

Product Optimization

Number of materials (or chemical substances for single-material products and multi-material product groups with uncountable color variations) assigned each assessment rating.