

Werkdruk : Max.10 bar
 Betriebsdruck : Max.10 bar
 Pression de service : Max.10 bar
 Operating pressure : Max.10 bar

L	409	512	615
---	-----	-----	-----

H	1600	1800	2000	2200
---	------	------	------	------

MONTAGEVOORSCHRIFT

MOUNTING INSTRUCTIONS

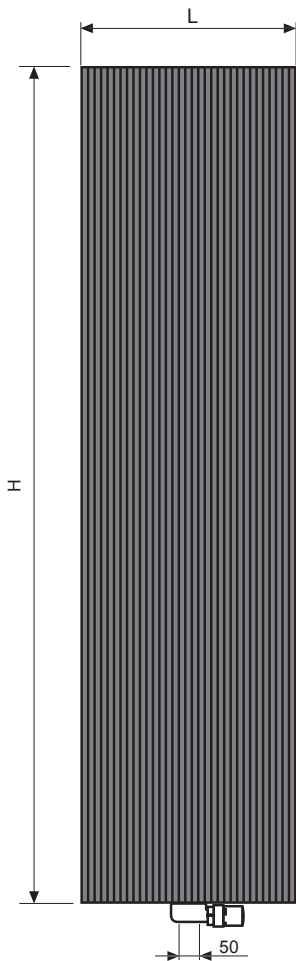
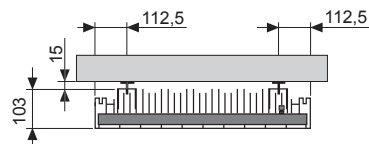
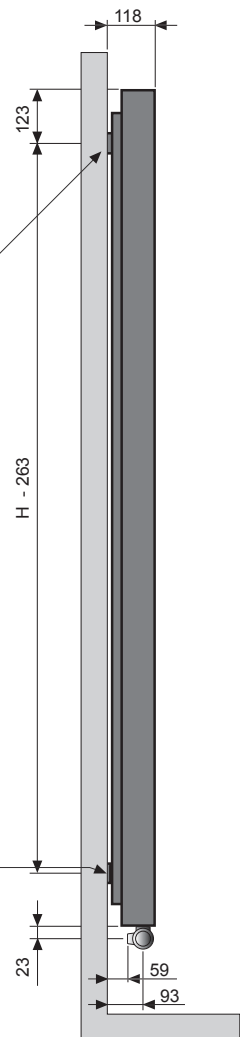
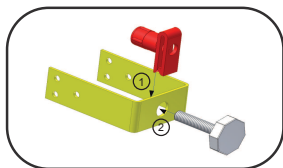
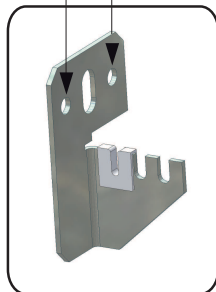
INSTRUCCIONES DE MONTAJE

MONTAGE-ANLEITUNG

INSTRUCTIONS DE MONTAGE

BRYCE PLUS

Voor uw veiligheid:borggat gebruiken
 Pour votre sécurité:utiliser le trou de fixation
 Für Ihre Sicherheit:das Sicherungsloch anwenden
 For your security:use the locking hole



Werkdruk : Max.10 bar
 Betriebsdruck : Max.10 bar
 Pression de service : Max.10 bar
 Operating pressure : Max.10 bar

L	375	450	525	600
---	-----	-----	-----	-----

H	1600	1800	2000	2200
---	------	------	------	------

HOW TO USE THE AUTOMATIC AIRVENT

