

Concrete Veneer Ceiling Tiles - Prestige

Robust design,
ultimate acoustics

PRODUCT CHARACTERISTICS:

- Durable 16 mm MDF core material
- 1.5 mm real cement finish
- 5 concrete finishes
- Lightweight
- Available as ceiling and wall panels
- Optionally foreseen with hardly visible nano perforation for high level acoustic performance
- Can be cut to size with regular wood saw
- Individually demountable

www.hunterdouglasarchitectural.eu

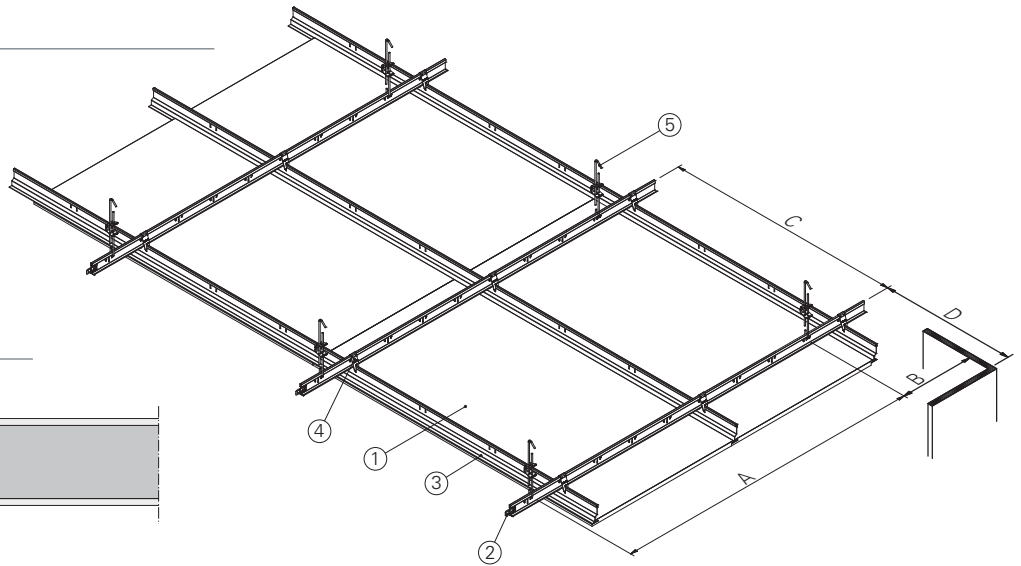
© Registered trademark - a HunterDouglas® product

Product : Concrete Veneer Ceiling Tiles
Material: Original

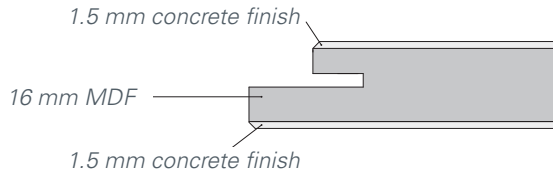
HunterDouglas 
Architectural

SYSTEM OVERVIEW

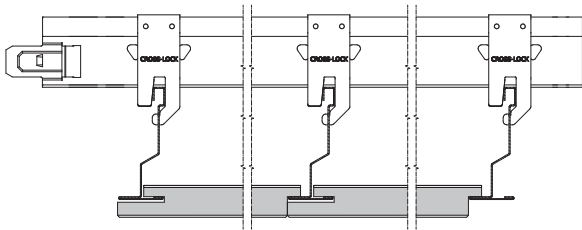
1. Concrete Veneer Ceiling Tile
2. CL 24-38 Main runner or CL 24-38 Stepped T profile 3600 mm
3. QL 24-38 Main runner / CL 24-60 Stepped Main runner 3600 mm
4. Cross Lock connection bracket
5. Quick hanger



TYPICAL SECTIONS



Note: The edges can be finished with real concrete banding or matching melamine.



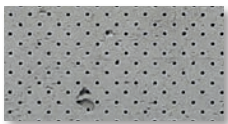
MAXIMUM SPAN

Concrete Veneer Ceiling Tile	Max. Main runner span		CTC Main runner	
	A	B	C	D
Tile size (LxW)				
Standard: 600 x 600 mm 1200 x 600 mm 1800 x 600 mm	1200	200	600	400

MATERIAL PROPERTIES

- **Material:** 16 mm Medium Density Fibreboard
- **Top-, and backlayer:** 1.5 mm 100% cement finish
- **Finish:** Two-component acrylic matt lacquer, water-based
- **Edges:** Real concrete edge banding or matching melamine
- **Sizes:** Max. 3020 x 1250 mm. *Other sizes upon request*
- **Weight:** ± 15 kg/m² (plain) or down to 12 kg/m² (perforated)
- **Fire retardant:** Class B-s1,d0 (plain and perforated)
- **Acoustic:** Up to α_w (ISO 11654) = 0,50 / NRC (ASTM-C423) = 0,70 / SAA (ASTM-C423) 0,72

ACOUSTICS

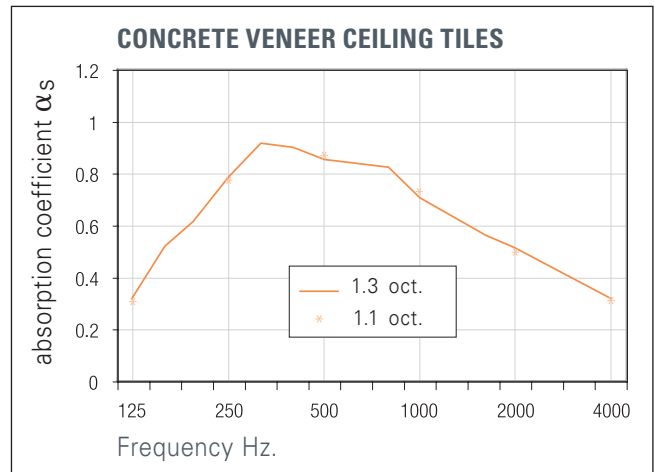


Nano Perforations

In case the panel is perforated, a layer of sound absorbing nonwoven will be added. Contact your sales contact for latest perforation patterns overview and acoustic performance.

CERTIFICATIONS

- Reaction to fire (EN 13501-1)
- Sound absorption (ISO 354:2003)
- Abrasion resistance (DIN 68861-2)
- Scratch resistance (DIN 68861-4)
- Resistance to fading (DIN 15187)



ROUND NANO-PERFORATION (a) α_w : 0.50 / NRC: 0.70 / SSA: 0.72

FREQUENCY (HZ)	125	250	500	1000	2000	4000
1/3 octave	0.18	0.62	0.90	0.83	0.57	0.39
	0.31	0.79	0.86	0.71	0.52	0.32
	0.52	0.92	0.85	0.64	0.45	0.23
1/1 octave	0.34	0.78	0.87	0.73	0.51	0.31

5 FINISHES



Natural White

Stone Grey

Original

Vintage

Dark Graphite

HunterDouglas 
Architectural

Hunter Douglas Architectural

Piekstraat 2
P.O. Box 5072 - 3008 AB Rotterdam - The Netherlands
Tel. +31 (0)10 - 486 99 11 - Fax +31 (0)10 - 484 79 10
www.hunterdouglasarchitectural.eu